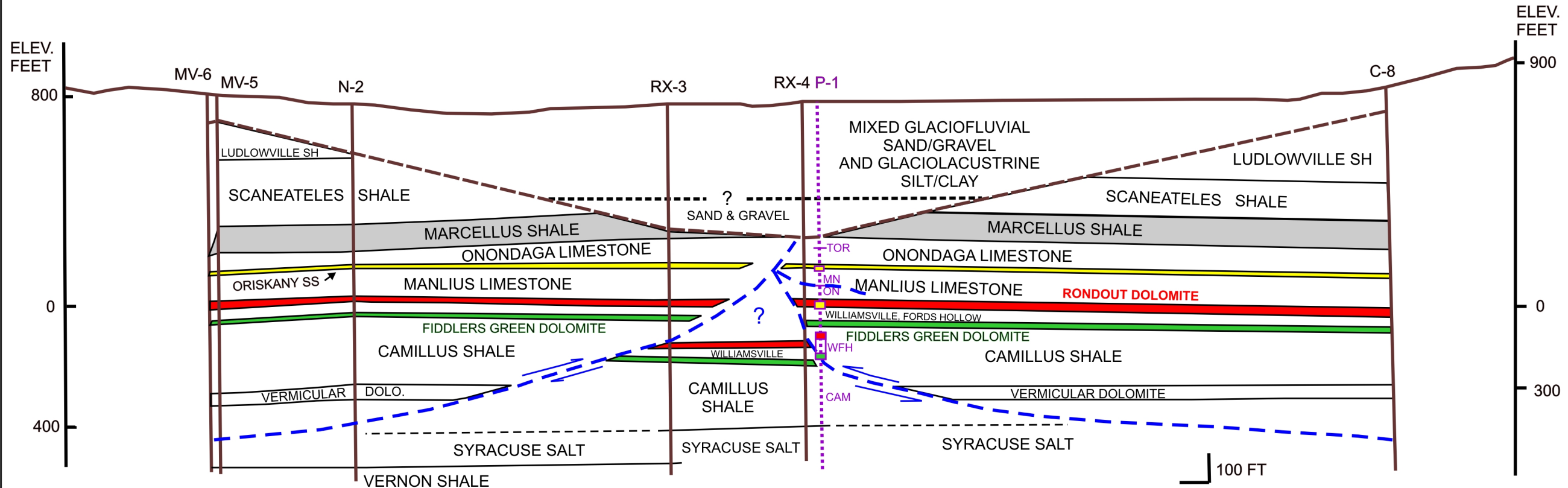


TULLY VALLEY CROSS SECTION SLIGHTLY SIMPLIFIED FROM H&A FIGURE 4, FEBRUARY 1992, File No. 70259-00
 COLORS ADDED FOR CLARITY, FAULT SOLUTION MODIFIED WHERE GEOLOGY UNCERTAIN
 SCALE CONVERTED TO 1:1 and GROUNDWATER INFORMATION OMITTED

WEST

EAST



--- Thrust faults

Well P-1 is only 120 feet northeast of RX-4 but slightly offline from main section, so formation contacts are lower and repeated reflecting structural complexity. Note especially repetition of beds in Onondaga, Oriskany, Manlius sections in P-1. Thrust relationships are complex and difficult to diagram accurately at P-1. TOR = Top of Rock

R.A. Young
 4/1/2006